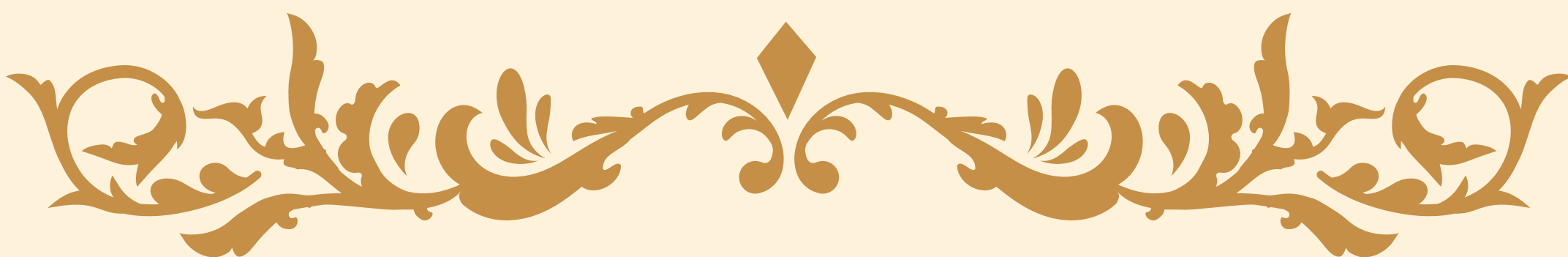


# Roedde House Museum

## Rental Guide

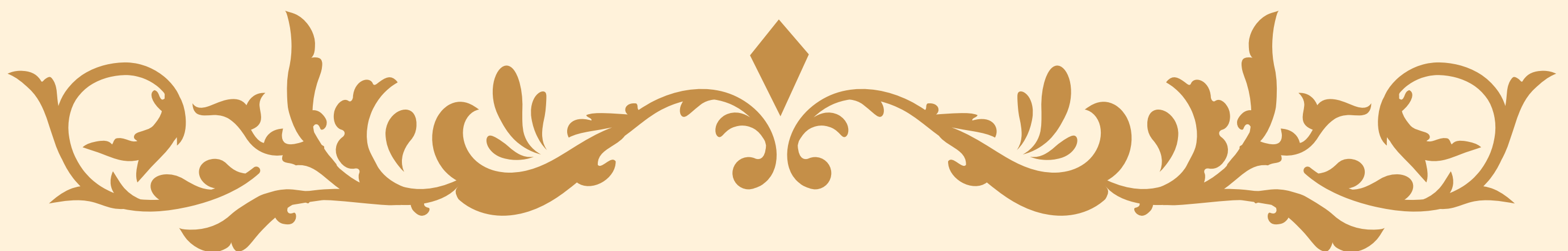




# House History



Built in 1893, Roedde House Museum is a true historical landmark and a hidden gem. Since 1980, the Roedde House Preservation Society has taken great care to renovate and furnish the house to reflect the atmosphere of late Victorian family life in the West End. Surrounded by downtown Vancouver's iconic City of Glass buildings, this Victorian mansion stands out and stands apart as a window into the city's past. Over the years, this designated Class-A Heritage House has welcomed thousands of visitors from around the world. The Museum also serves as a unique and intimate Vancouver event space and venue. We have hosted groups of varying sizes for a wide array of events, receptions and meetings. Invite your guests to step back in time while enjoying all the modern amenities of a contemporary event space.



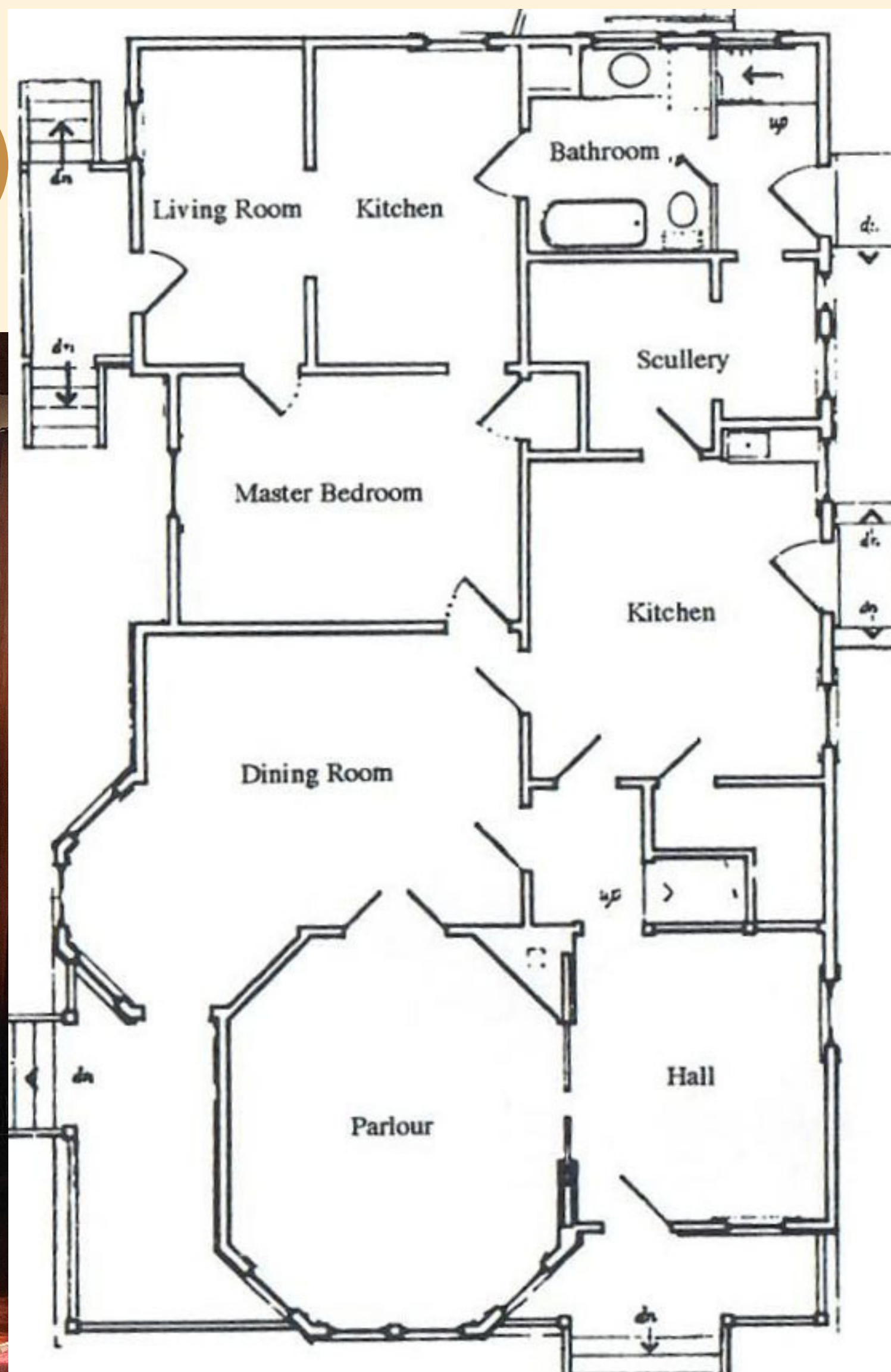


# Rental Details



- Space: Event rental space is limited to the first/main floor (see floor plan below), however, the second floor bedrooms may be used as dressing rooms.
- **Rates & Hours: \$250/hour**, minimum 3-hour rental (rental rates are all-inclusive- no additional fees or taxes). The rental time must include set-up and clean-up.
- Capacity: **50-60 people for a reception**, cocktail-style (standing) event, **25-35 people for a seated event** (such as a meeting or lecture), or **10-12 people for a seated dining event** (dinner or tea party).
- A refundable damage deposit is required - amount is dependent on rental type and scope.
- Parking: There are 4 dedicated parking spots in the shared lot behind the Museum.

Floor Plan - Main Floor  
1640 ft<sup>2</sup>





# Other Rentals

The Museum also offers rentals with varying rates for photoshoots, filming and other creative projects! No set decoration needed — Roedde House is ready for action. The Museum has an abundance of period-accurate late-Victorian artefacts furnishing each room, making for a fully-dressed set upon crew arrival.

- Photoshoots: \$125/hour
- Filming:
  - Commercial: \$500/hour, 3-hour minimum
  - Student Films/ Educational Non-Commercial Films: \$125/hour, 3-hour minimum





# Amenities



- There is an 1893 Steinway piano in the Parlour that is free for use in any event rental.
- In addition to our vintage 1890s kitchen, we have a modern kitchen with a fridge, a dishwasher & a microwave, all available for use.
- Museum china cups & saucers are free for use, but other tableware must be provided by the renter.
- In addition to our Preferred Event Partners, caterers that are familiar with the Museum include: The Butler Did It, The Lazy Gourmet, and Out to Lunch.
- There are 35 modern stackable chairs that can be used by rental guests.
- There are two modern bathrooms on the main floor, including a wheelchair accessible washroom.
- Renters may use a portable amp supplied by the Museum

# Regulations

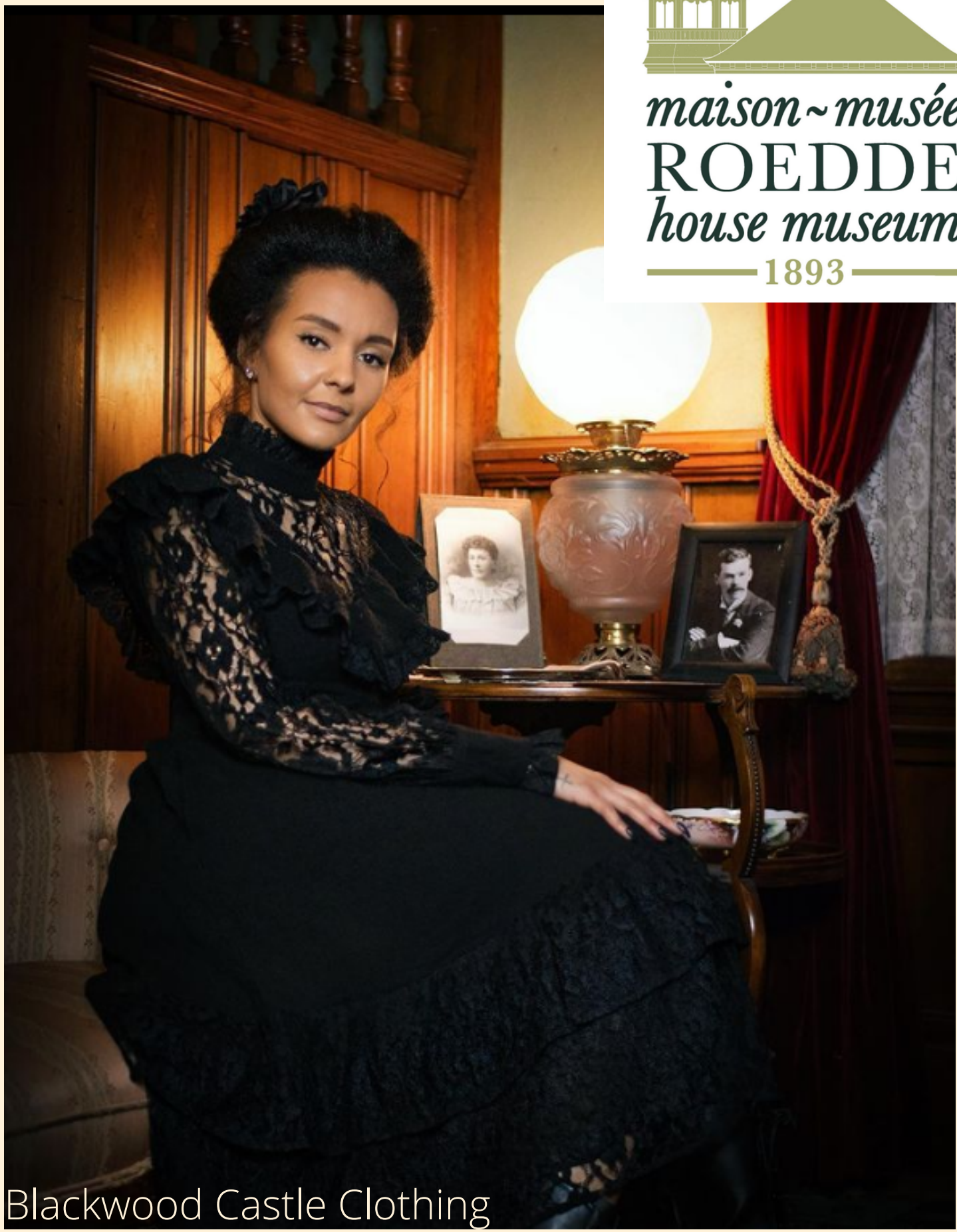
- Renters must provide their own liquor license if alcohol is being served.
- The museum does not allow stiletto heels or glitter inside.
- Events are typically restricted to OUTSIDE of regular tour hours.
- No red or rosé wine is permitted inside the house.
- No dancing is permitted in the house due to the original floors, proximity of artifacts, etc.
- Stiletto heels or shoes with damaging soles are not permitted in the house.
- Furniture may be moved - only by House staff.
- Smoking is totally prohibited inside the building and on the connected porches/verandas.
- The Society is required by the City to have at least one, if not more, members of our Staff to be in the building during the full rental period.







Amrit Photography



Blackwood Castle Clothing





# Revenue from Rentals



The Roedde House Museum is a not-for-profit cultural institution dedicated to preserving the social history of Vancouver. The museum aims to create an inclusive space that makes Vancouver's history accessible and engaging for all. Rental revenue is put towards fulfilling the Roedde House mandate to create a welcoming educational and cultural space for thousands of visitors & students.

